

# FLOWDRIFT MG2 Series Gear Pump

MG2 (XK / XB) Magnetic drive gear pump is a new gear pump, XK Series gear made of special engineering, and quality Stainless steel housing composed of a gear pump. XB Series gear made of high-quality copper, Stainless steel shell composition and quality gear pump, the gear pump lubricating fluid in the absence of the case, can work with structural design of magnetic coupling drive to solve the problem of leakage of the gear shaft end. it is known as a gear pump leak mainly used in the field of micro-delivery medical devices, blood dialysis machines, food processing, filling, selling equipment, analytical instruments.

## Model specification

Model	MG	2	09	X	P	02	B	10
Position	1	2	3	4	5	6	7	8
1	Pump Type	MG = Magnetic drive gear pumps						
2	Pump Series	2 = 2 series						
3	Gear height	04 = 4mm, 09 = 9mm, 13 = 13mm, 17 = 17mm						
4	Shell material	S = Stainless steel 304, X = Stainless steel 316						
5	Gear Material	P = PEEK plastic, B = PPS plastic, S = Stainless steel 304, X = Stainless steel 316						
6	Pressure limiting valve	01 = the inlet and outlet on the same side, 02 = the inlet and outlet on the opposite sides, 03 = angle 90° between inlet direction and outlet direction						
7	Motor type	A = brushless motor, B = brushed motor, S = stepper motor, C = servo motor, E = explosion-proof AC motor						
8	Project no.	10						

## Technical parameters

Specifications	Displacement (ml / rev)	Rated pressure (bar)	Max pressure (bar)	Rev. range (rpm)	Medium viscosity (cps)
Model					
MG204XK	0.27	5	0 - 20	500 to 6000	0.2 to 3000

MG209XK	0.55				
MG213XK	0.75				
MG204XB	0.27	3		500 to 3000	500 to 2500
MG209XB	0.55				
MG213XB	0.75				

Note: 1, the transmission medium temperature: -30 °C ~ 100 °C (except frozen); Ambient temperature: -30 ~ 50 °C.

2, the inner rotor gear pump for NdFeB magnets PPS plastic coated, static sealing material is PTFE; rotor cover material Stainless steel 316.

3, the liquid containing the particle diameter of ≤20 microns; PEEK hardness less than the hardness of the particles.

4, MG200XK gear pumps all over the liquid material: comply with FDA standards testing requirements.

5, the work: 24 hours of continuous duty.

6, MG200XB pump is suitable for conveying oil or medium viscosity ≥500cps media.

7, or may be a high pressure (20bar) used in a closed system under vacuum (-0.8bar).

## Represents Model: MG209XP02B10

Charateristics and parameters:

Rated voltage: 24V

Flow range: 0~180L/H

Inlet and outlet pressure difference: 3Bar (water as medium)

Temperature resistance: -10~100°C

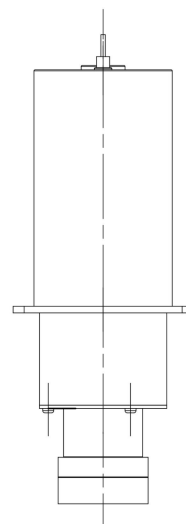
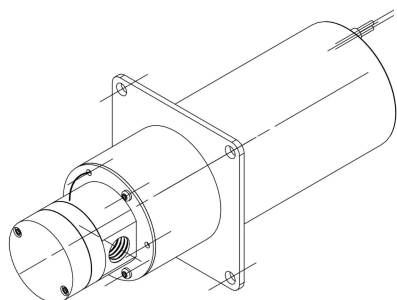
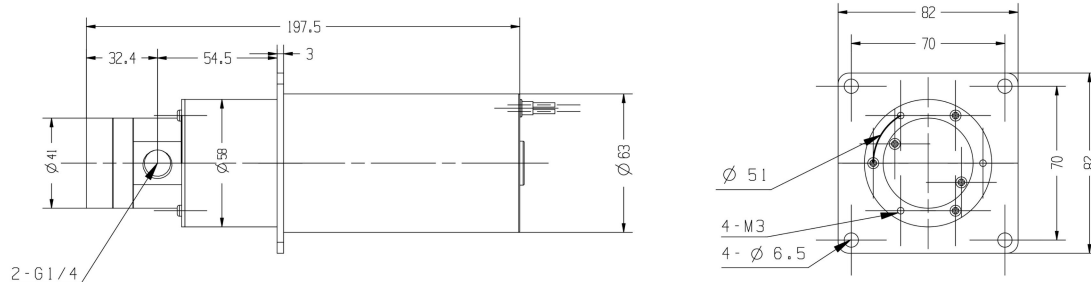
Working speed: 5000rpm

Weight: 1.8kg

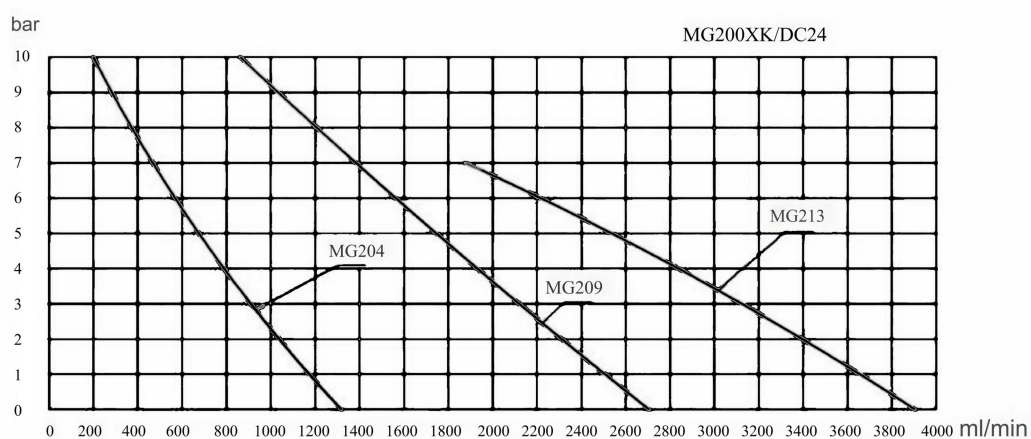
Water inlet and outlet: G1/4

## Dimension drawings

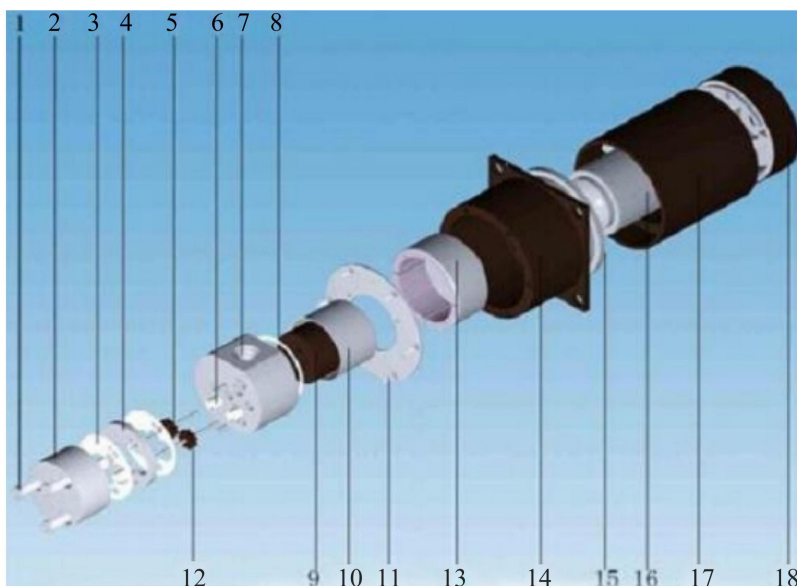
Represents 63 DC brushed motors assembled



## Flow-pressure curve drawings:



## Exploded View



- |                    |                      |                             |                              |                            |
|--------------------|----------------------|-----------------------------|------------------------------|----------------------------|
| 1. 内六角螺丝 Screw     | 5. 主动齿轮 Drive gear   | 9. 内磁环 Magnet rotator       | 13. 驱动环 Drive magnet         | 17. 电机外壳(定子) Motor housing |
| 2. 顶盖 Top cover    | 6. 滑动轴承 Shaft sleeve | 10. 屏蔽罩 Shielding           | 14. 联接套 Motor connector      | 18. 后端盖 Motor back cover   |
| 3. 聚四氟乙烯密封膜 PTFE   | 7. 下盖 Down cover     | 11. 联接板 Shielding connector | 15. 电机前法兰 Motor front flange |                            |
| 4. 泵体 Gear housing | 8. 聚四氟乙烯密封圈 PTFE     | 12. 从动齿轮 Driven Gear        | 16. 电机转子 Motor rotator       |                            |

## Dongguan Sansheng Electrical Appliance Co., Ltd

地址：广东省东莞市万江区东堤路蟹地新邨三街 16 号

Add: No.16, 3rd Street, Xie Di Xin Cun, Dong Di Road, Wanjiang District, Dongguan City, 523000

电话 Tel. +86-769-22286081

网址 Website: [www.sovoflo.cn](http://www.sovoflo.cn)

邮箱 Email: [info@sovoflo.com](mailto:info@sovoflo.com)